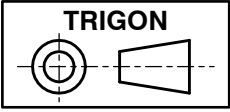
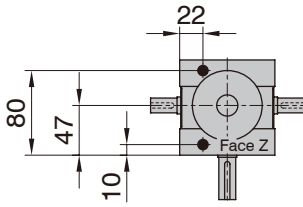
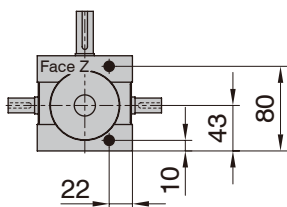
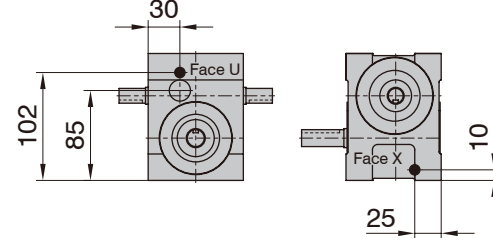


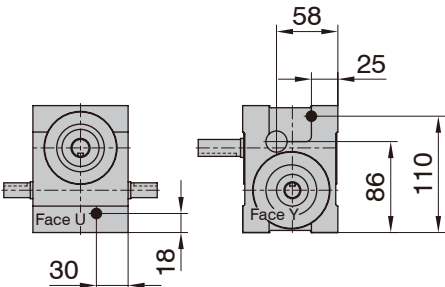
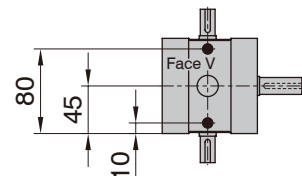
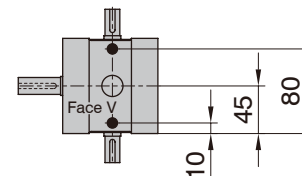
The keyway position of the input shaft in the drawing suggests the center of dwell period.



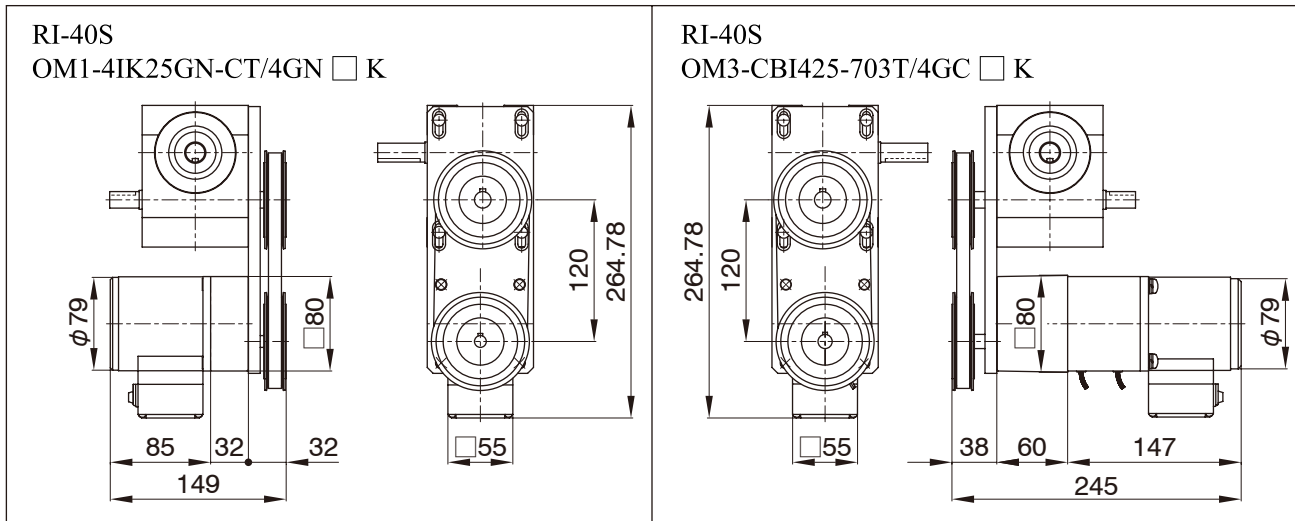
RI/RO-40S

Style by Oil Plug Machining Position

| Style A | Style B | Style C |
|---|---|--|
|  |  |  |

| Style D | Style E | Style F |
|--|---|--|
|  |  |  |

| Additional Information | |
|--------------------------------|-----------------------------|
| Filler, Drain (black circle) | Rc1/8 |
| Level (white circle) | Φ20 |
| Rough Product Weight | 7kg |
| Rough Lubricating Oil Capacity | 0.15 Liters |
| Mounting Tapped Holes | Pre-machined at all 6 faces |



Additional Notes

- Various types of an AC standard small-sized motor can be mounted.
- Mounting positions of an AC standard small-sized motor is standardized as 4 different pattern.
- MYTORQ torque limiter 300 series can be mounted.
- Autoflex couplings can be mounted.
- Autogard torquelimiter 400 series or Autoflex couplings can be mounted on the input shafts of a worm reducer.