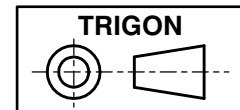
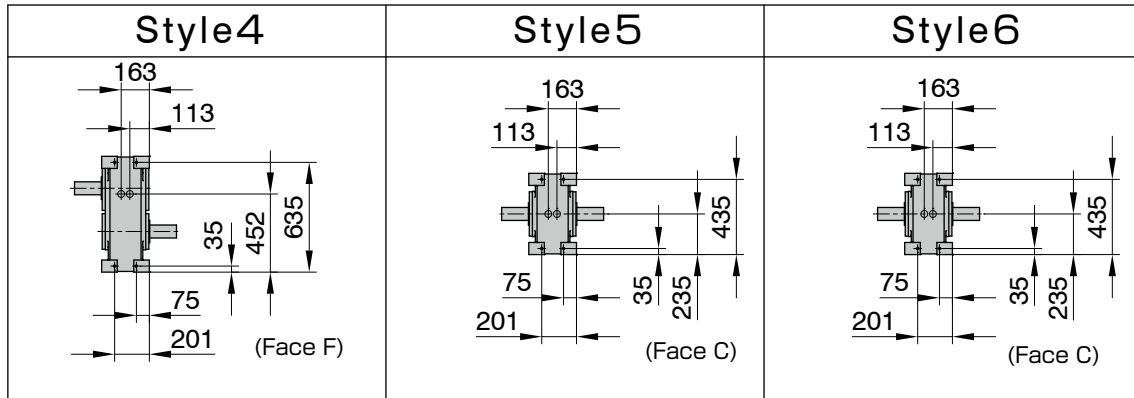
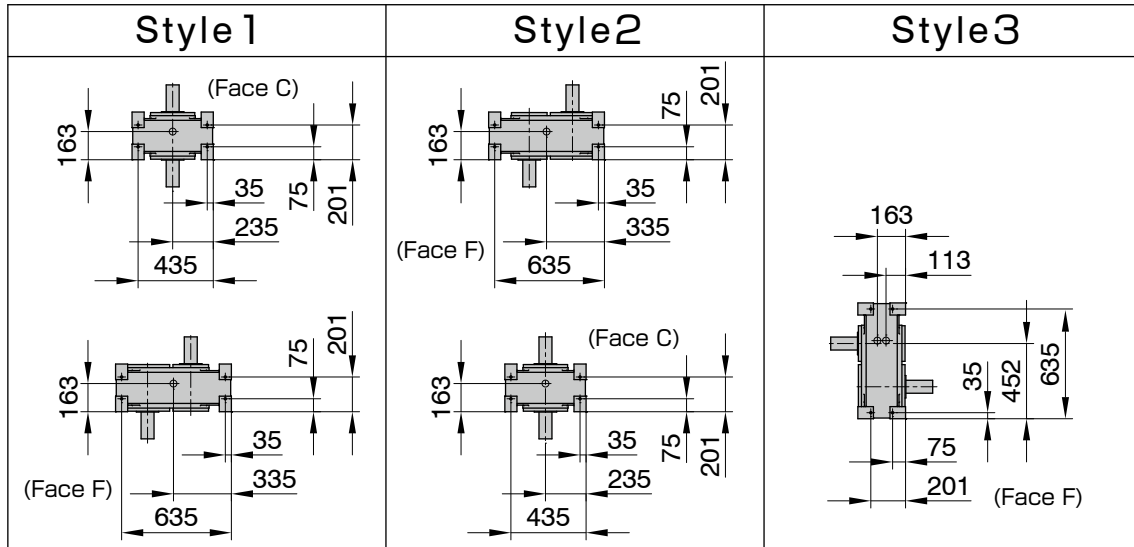


The keyway position of the input shaft in the drawing suggests the center of dwell period.



PI/PO-250S

Style by Oil Plug Machining Position



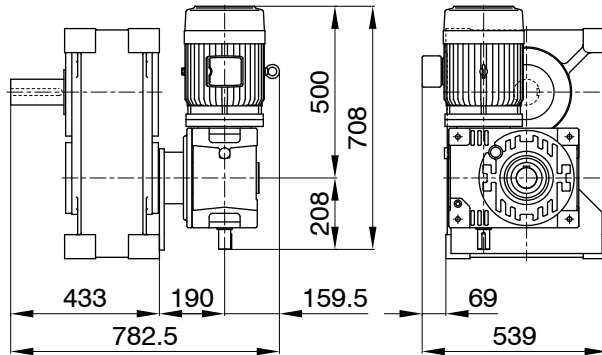
Additional Information

| | |
|--------------------------------|--|
| Filler, Drain(black circle) | Rc1/2 |
| Level (white circle) | ϕ 40 |
| Rough Product Weight | 200kg |
| Rough Lubricating Oil Capacity | 14.0 Liters |
| Mounting Tapped Holes | Machining the specified faces upon request |
| Mounting Through-holes | Machining the specified faces upon request |

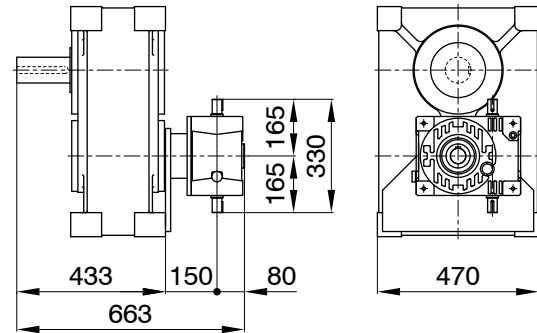
PI/PO-250S

Mounting Example of Optional Parts

PI-250S
MRA1-37-125

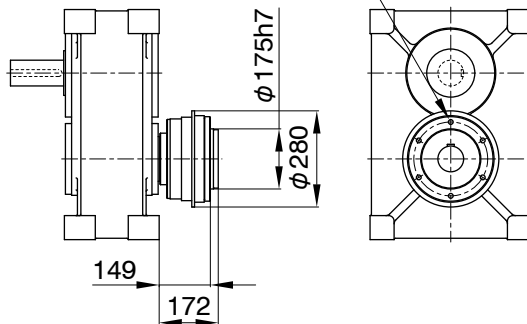


PI-250S
RA2-100

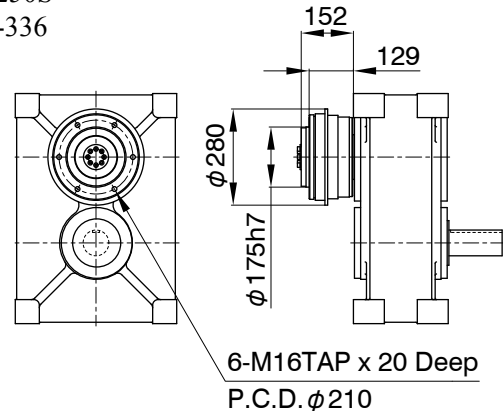


PI-250S
TB-326

6-M16TAP x 20 Deep
P.C.D. ϕ 210



PI-250S
TA-336



Additional Notes

- MA series worm reducer MAO100 and 125 can be mounted.
- Mounting positions of a drive unit is standardized as 8 different pattern.
- MYTORQ torque limiter 300 series can be mounted.
- Autoflex coup@lings can be mounted.
- Autogard torquelimiter 400 series or Autoflex couplings can be mounted on the input shafts of a worm reducer.